

NOTES:

1. WHEN POSITIONING THE GAS TURBINE WITH THE STATION AND SURROUNDINGS, CONSIDERATION SHOULD BE GIVEN TO PREVAILING WINDS SO THAT THE POSSIBILITY OF EXHAUST GAS ENTERING THE INLET WILL BE MINIMIZED.
2. ALL DIMENSIONS IN BRACKETS () ARE IN MILLIMETERS, ALL OTHERS ARE IN INCHES.
3. IF REQUIRED INSTALLER WILL SUPPLY ACCESS STEPS FOR: SWITCHGEAR
4. CUSTOMER LOCATED EQUIPMENT SHOULD BE A MINIMUM OF 48.00 (1219.2) FROM GE LOCATED EQUIPMENT TO ENSURE ADEQUATE VENTILATION AND EQUIPMENT ACCESSIBILITY, UNLESS OTHERWISE INDICATED.
5. THE GAS TURBINE AND GAS VALVE MODULES ARE DESIGNED FOR A CLASS 1 DIVISION 2 GROUP D LOCATION. EXTERNAL TO THESE COMPARTMENTS THE LOCATION IS NORMALLY NON-HAZARDOUS, HOWEVER THIS CLASSIFICATION MAY BE INFLUENCED BY EXTERNAL EQUIPMENT. NFPA 497A STIPULATES THAT A 15 FOOT RADIUS FROM A GAS LEAK SOURCE LOCATED OUTDOORS AT GRADE IS CONSIDERED A CLASS 1 DIVISION 2 AREA; ANY BELOW GRADE SUMPS OR TRENCHES WITHIN THE 15 FOOT RADIUS IS A CLASS 1 DIVISION 1 LOCATION. A LEAK SOURCE IS DEFINED AS A FLANGED OR SREWED CONNECTION, FITTINGS, VALVES, METERS, ETC.
7. REFERENCE DRAWINGS ML1-M940 AND ML1-O326 FOR GE SUPPLIED OFF BASE EQUIPMENT DETAILS.

NO 123E1125		REV B	1	
REVISIONS				
REV	DESCRIPTION	DATE	APPROVED	
A	REVISED ALL SHEETS UPDATED NOTE 4 AND ADDED NOTES 7 AND 8, UPDATED GAS VALVE MODULE, PEECC, SWITCHGEAR, GNAC, EXHAUST AND INLET SYSTEMS AN# CDB3426 R.O. PERRY	01-08-06	VCM1	
B	UPDATED REV STATUS OF SHEETS ADDED ACOUSTICAL BARRIER WALL AROUND THE PLENUM, ROTATED SWITCHGEAR 90° CCW, RELOCATED EXHAUST FRAME BLOWERS ON ZONE F-4, UPDATED ALL LUB OIL VENT AND OIL TANK VENT PIPING, ADDED WALKWAYS AROUND OF SWITCHGEAR, UPDATED PEECC ON ZONE E-7 DELETED NOTE 6 ON ZONE G-8 AN# CD91848 IVAN A. MATA	02-01-16	VCM1	

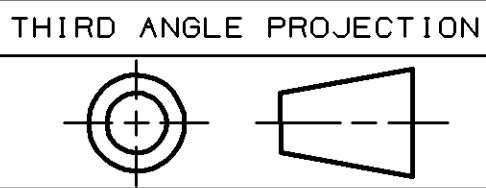
REVISE ON CAD ONLY
UG PART: 123E1125P001

B	B	B	B	REV	REV STATUS
4	3	2	1	SH	OF SHEETS

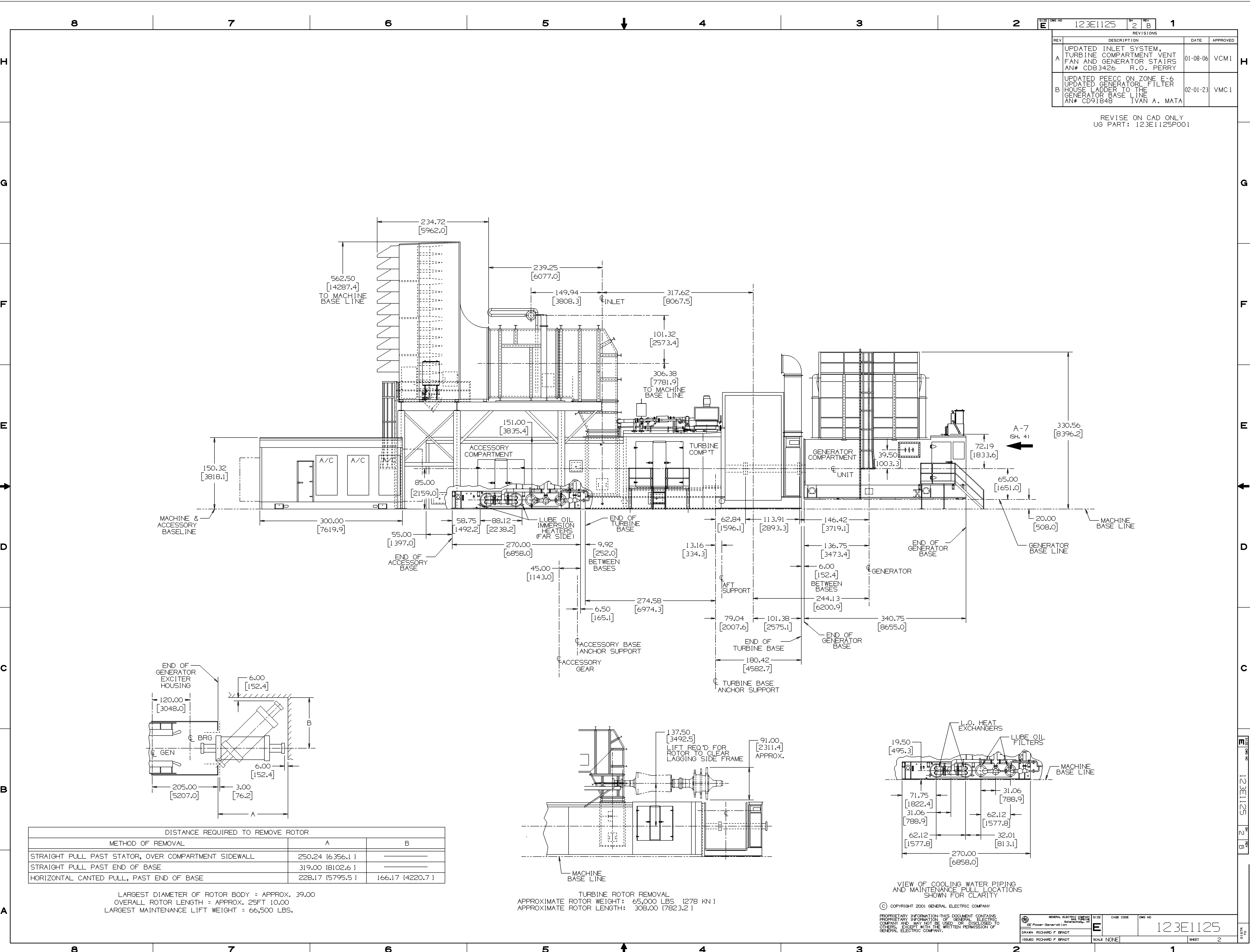
PROJECT NAME: PSE&G, MORRISTOWN
GE DESIGN MEMO: GR0730

UNLESS OTHERWISE SPECIFIED		SIGNATURES	DATE	GE Power Generation		GENERAL ELECTRIC COMPANY	
DIMENSIONS ARE IN INCHES		DRAWN RICHARD F BRADT	01-04-20	GAS TURBINE		Schenectady, NY	
TOLERANCES ON:		ENGINEER RICHARD F BRADT	01-04-20	OUTLINE, MECHANICAL		GAS TURBINE & LOAD	
2 PL DECIMALS ±		ENGINEER BRIAN WOLACZ	01-04-20	FIRST MADE FOR ML-7A1PEA234-1T4		0.306	
3 PL DECIMALS ±		ISSUED RICHARD F BRADT	01-04-20	SIZE CASE CODE		DWG NO	
ANGLES ±				E		123E1125	
FRACTIONS ±				SCALE NONE		SHEET	
APPLIED PRACTICES				SIM TO		NONE	
348A9200							

© COPYRIGHT 2001 GENERAL ELECTRIC COMPANY
PROPRIETARY INFORMATION-THIS DOCUMENT CONTAINS
PROPRIETARY INFORMATION OF GENERAL ELECTRIC
COMPANY AND MAY NOT BE USED OR DISCLOSED TO
OTHERS, EXCEPT WITH THE WRITTEN PERMISSION OF
GENERAL ELECTRIC COMPANY.

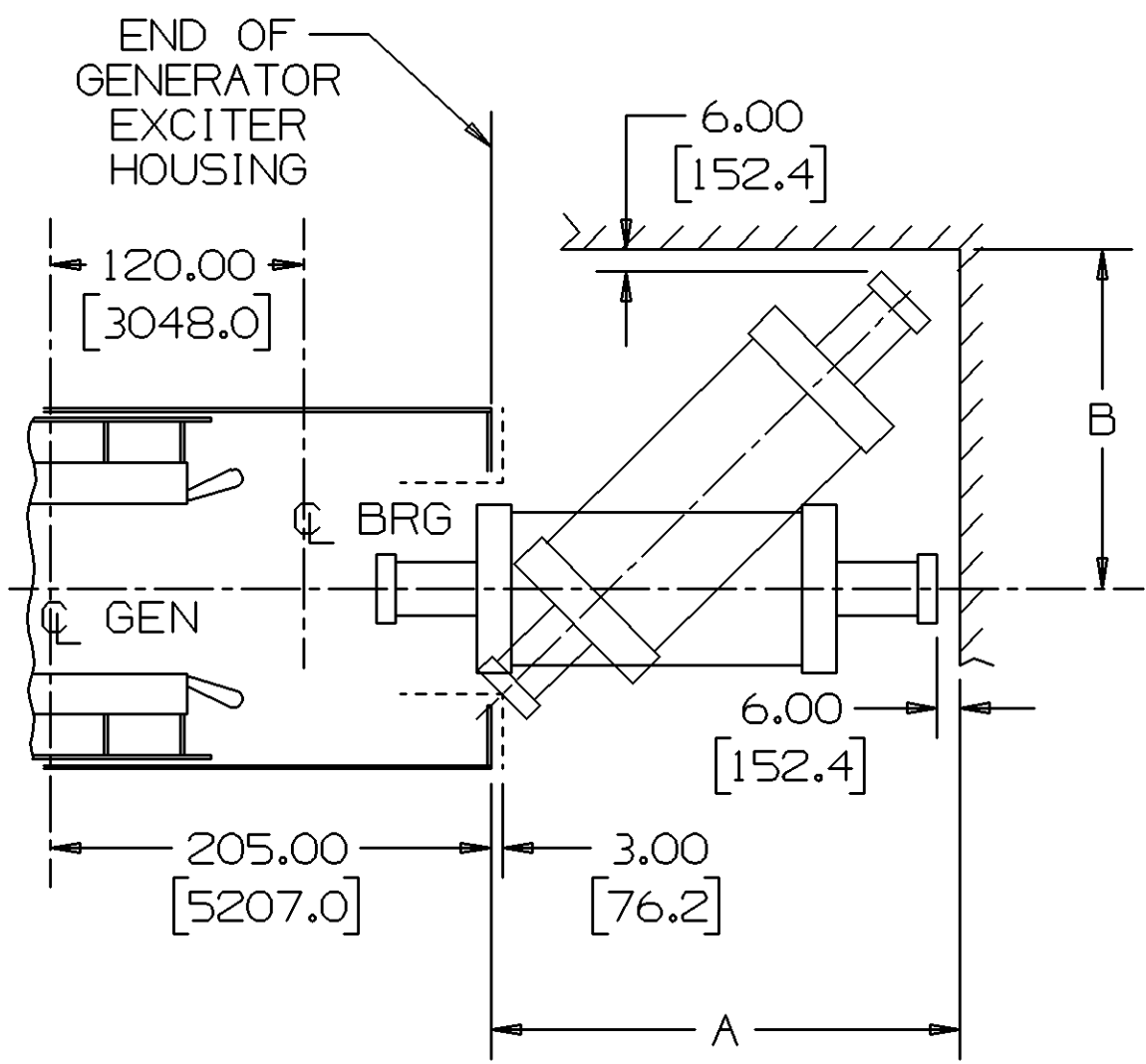


THIRD ANGLE PROJECTION



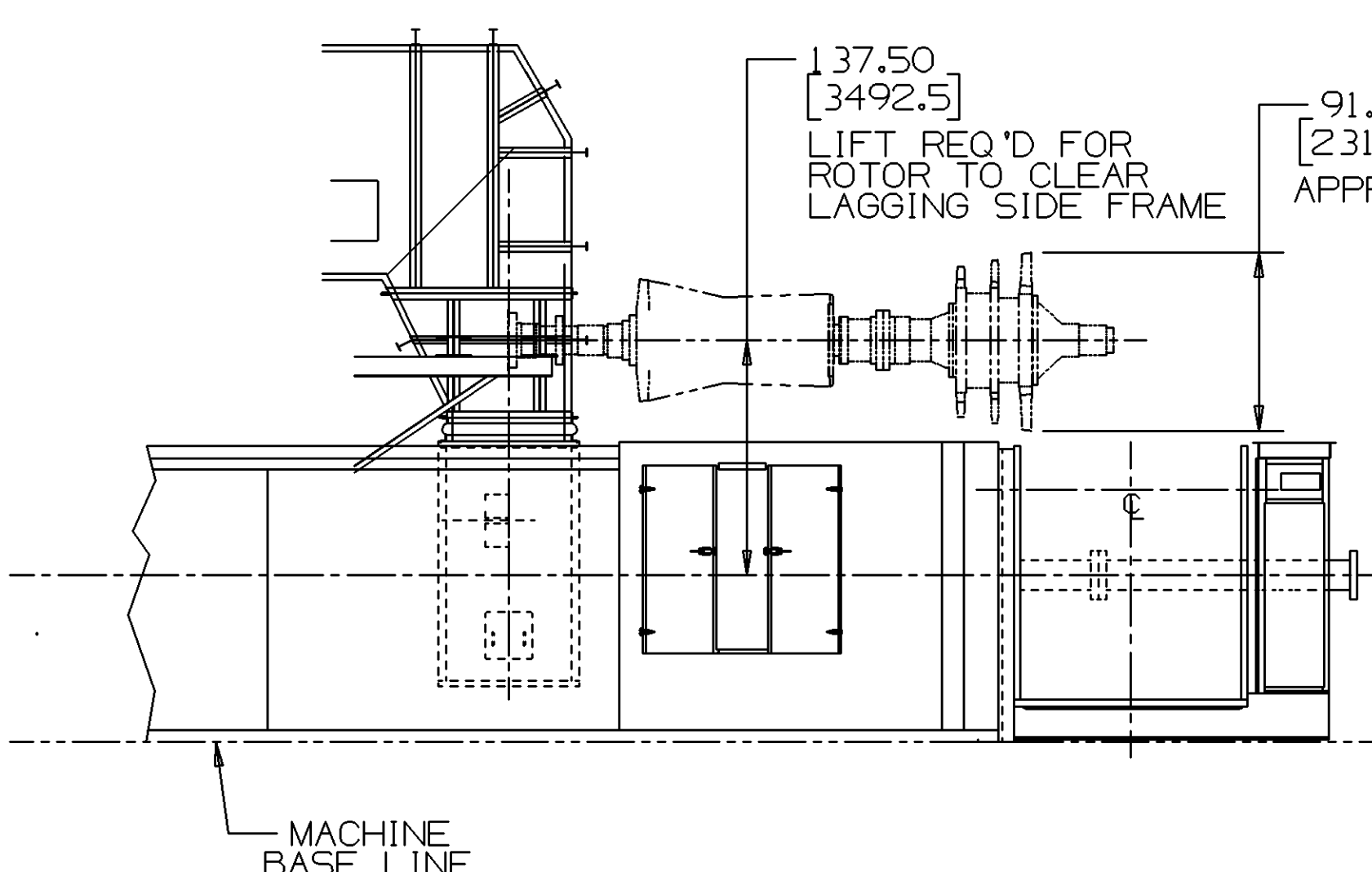
NO 10		123E1125	SH 2	REV B	1	
REVISIONS						
REV	DESCRIPTION				DATE	APPROVED
A	UPDATED INLET SYSTEM, TURBINE COMPARTMENT VENT FAN AND GENERATOR STAIRS AN# CD83426 R.O. PERRY				01-08-06	VCM1
B	UPDATED PEECC ON ZONE E-6 HOUSE LADDER TO THE GENERATOR BASE LINE AN# CD91848 IVAN A. MATA				02-01-23	VMC1

REVISE ON CAD ONLY
UG PART: 123E1125P001

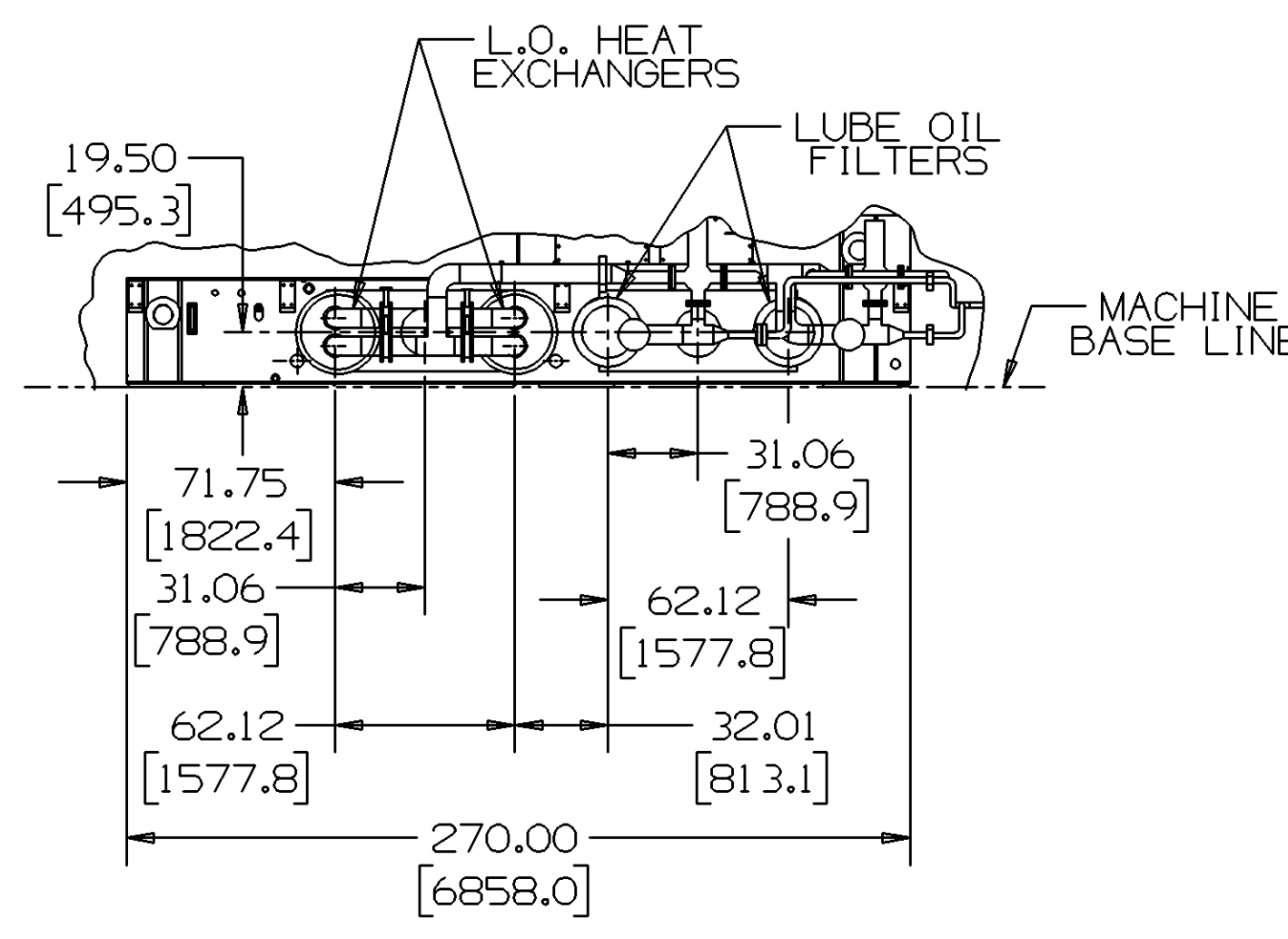


DISTANCE REQUIRED TO REMOVE ROTOR		
METHOD OF REMOVAL	A	B
STRAIGHT PULL PAST STATOR, OVER COMPARTMENT SIDEWALL	250.24 [6356.1]	
STRAIGHT PULL PAST END OF BASE	319.00 [8102.6]	
HORIZONTAL CANTED PULL, PAST END OF BASE	228.17 [5795.5]	166.17 [4220.7]

LARGEST DIAMETER OF ROTOR BODY = APPROX. 39.00
OVERALL ROTOR LENGTH = APPROX. 25FT 10.00
LARGEST MAINTENANCE LIFT WEIGHT = 66,500 LBS.



TURBINE ROTOR REMOVAL
APPROXIMATE ROTOR WEIGHT: 65,000 LBS (278 KN)
APPROXIMATE ROTOR LENGTH: 308.00 [7823.2]



VIEW OF COOLING WATER PIPING
AND MAINTENANCE PULL LOCATIONS
SHOWN FOR CLARITY

© COPYRIGHT 2001 GENERAL ELECTRIC COMPANY

PROPRIETARY INFORMATION-THIS DOCUMENT CONTAINS
PROPRIETARY INFORMATION OF GENERAL ELECTRIC
COMPANY AND MAY NOT BE USED OR DISCLOSED TO
OTHERS, EXCEPT WITH THE WRITTEN PERMISSION OF
GENERAL ELECTRIC COMPANY.

GENERAL ELECTRIC COMPANY		SIZE	CASE CODE	DWG NO
GE Power Generation		E		123E1125
DRAWN: RICHARD P. BRADT		SCALE	NONE	SHEET 2

